

## 20' GP



	L	W	H
External	20'0" 6.10m	8'0" 2.44m	8'6" 2.59m
Internal	19'4" 5.90m	7'8" 2.34m	7'9" 2.38m
Door Opening	19'4" 5.90m	7'8" 2.34m	7'6" 2.27m
Max. Capacity	1158-1186 (cu ft) 39380-47880 (lbs) 32.85-33.58 (m) 17860-21700 (kgs)		
Tare Weights	5030-5490 (lbs) 2280-2490 (kgs)		

## 20' HQ



	L	W	H
External	20'0" 6.10m	8'0" 2.44m	9'6" 2.91m
Internal	19'4" 5.90m	7'8" 2.34m	8'10" 2.71m
Door Opening	19'4" 5.90m	7'8" 2.34m	8'6" 2.59m
Max. Capacity	1350-1390 (cu ft) 39380-47880 (lbs) 38.23-39.36 (m) 17860-21700 (kgs)		
Tare Weights	5350-5550 (lbs) 2427-2495 (kgs)		

## 20' DD



	L	W	H
External	20'0" 6.10m	8'0" 2.44m	8'6" 2.59m
Internal	19'4" 5.90m	7'8" 2.34m	7'9" 2.38m
Door Opening	19'4" 5.90m	7'8" 2.34m	7'6" 2.27m
Max. Capacity	1158-1186 (cu ft) 39380-47880 (lbs) 32.85-33.58 (m) 17860-21700 (kgs)		
Tare Weights	5030-5490 (lbs) 2280-2490 (kgs)		

## 20' Side Open



	L	W	H
External	20'0" 6.10m	8'0" 2.44m	8'6" 2.59m
Internal	19'4" 5.90m	7'8" 2.34m	7'9" 2.38m
Door Opening	19'4" 5.90m	7'8" 2.34m	7'6" 2.27m
Max. Capacity	1158-1186 (cu ft) 39380-47880 (lbs) 32.85-33.58 (m) 17860-21700 (kgs)		
Tare Weights	5030-5490 (lbs) 2280-2490 (kgs)		

## 20' OT



	L	W	H
External	20'0" 6.10m	8'0" 2.44m	8'6" 2.59m
Internal	19'4" 5.90m	7'8" 2.34m	7'9" 2.38m
Door Opening			
Max. Capacity	1158-1186 (cu ft) 48280-62240 (lbs) 32.85-33.58 (m) 21900-28230 (kgs)		
Tare Weights	4630-4960 (lbs) 2100-2250 (kgs)		

## 20' FR



	L	W	H
External	20'0" 6.10m	8'0" 2.44m	8'6" 2.59m
Internal	18'1"-19'6" 5.51-5.94m	8'0" 2.44m	7'1"-7'7" 2.16-2.31m
Door Opening			
Max. Capacity	46910-39900 (lbs) 21280-30005 (kgs)		
Tare Weights	4850-6000 (lbs) 2200-2720 (kgs)		

## 20'RF



	L	W	H
External	20'0" 6.10 m	8'0" 2.44m	8'6" 2.59m
Internal	17'6" 5.34 m	7'2" 2.20m	7'4" 2.25m
Door Opening	17'6" 5.34 m	7'3" 2.21m	7'3" 2.21m
Max. Capacity	932-1003 (cu ft) 45460-60450 (lbs) 26.4-28.4 (m) 20620-27420 (kgs)		
Tare Weights	6750-7450 (lbs) 3060-3380 (kgs)		

## 20' Container

New - DNV, GL or ABS Certified

Used - Under IICL, Cargo Worthy, Wind Water Tight

Customized - Upon request

40'

40' GP



	L	W	H
External	40'0"	8'0"	8'6"
	12.19m	2.44m	2.59m
Internal	39'6"	7'8"	7'1"
	12.03m	2.35m	2.39m
Door Opening	39'6"	7'8"	7'6"
	12.03m	2.35m	2.28m
Max Capacity	2390-2397 (cu ft) 58820-60740 (lbs)		
	67.70-37.80 (m)		28860-27550 (kgs)
Tare Weights	6460-8380 (lbs)		
	2390-3800 (kgs)		

40' HQ



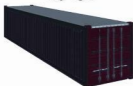
	L	W	H
External	40'0"	8'0"	9'6"
	12.19m	2.44m	2.91m
Internal	39'6"	7'8"	8'10"
	12.03m	2.35m	2.71m
Min. Door Opening	39'6"	7'8"	8'6"
	12.03m	2.35m	2.59m
Max Capacity	2700-2715 (cu ft) 58970-60400 (lbs)		
	76.40-76.88 (m)		27650-27400 (kgs)
Tare Weights	6800-8230 (lbs)		
	3080-3730 (kgs)		

40' DD



	L	W	H
External	40'0"	8'0"	8'6"
	12.19m	2.44m	2.59m
Internal	39'6"	7'8"	7'10"
	12.03m	2.35m	2.39m
Door Opening	39'6"	7'8"	7'6"
	12.03m	2.35m	2.28m
Max Capacity	2390-2397 (cu ft) 58820-60740 (lbs)		
	67.7-37.80 (m)		28860-27550 (kgs)
Tare Weights	6460-8380 (lbs)		
	2930-3800 (kgs)		

40' OT



	L	W	H
External	40'0"	8'0"	8'6"
	12.19m	2.44m	2.59m
Internal	39'5"	7'8"	7'9"
	12.02m	2.33m	2.38m
Door Opening			
Max Capacity	2295 (cu ft) 58490 (lbs)		
	65 (m)		26530 (kgs)
Tare Weights	8050 (lbs)		
	3650 (kgs)		

40' RF



	L	W	H
External	40'0"	8'0"	8'6"
	12.19m	2.44m	2.59m
Internal	37'8"	7'4"	7'1"
	11.48m	2.24m	2.18m
Door Opening	37'8"	7'4"	7'0"
	11.48m	2.24m	2.13m
Max Capacity	1963-2055 (cu ft) 56990-58180 (lbs)		
	55.60-59.29 (m)		25850-26390 (kgs)
Tare Weights	9020-10210 (lbs)		
	4090-4630 (kgs)		

40' FR



	L	W	H
External	40'0"	8'0"	8'6"
	12.19m	2.44m	2.59m
Internal	39'5"	7'7"	6'6"
	12.01m	2.31m	1.98m
Min. Door Opening			
Max Capacity	56188 (lbs)		
	25485 (kgs)		
Tare Weights	11012 (lbs)		
	4995 (kgs)		

## 40' Container

New - DNV, GL or ABS Certified

Used - Under IICL, Cargo Worthy, Wind Water Tight

Customized - Upon request